

PACIFIC RECORDERS & ENGINEERING

ON JANUARY 1, 1996
PACIFIC RECORDERS
& ENGINEERING CORPORATION BECAME
**PACIFIC RESEARCH
& ENGINEERING CORPORATION.**
THIS NAME UPDATE IS A REFLECTION OF
PACIFIC RESEARCH & ENGINEERING'S
ON-GOING COMMITMENT OF DESIGNING
LEADING-EDGE AUDIO PRODUCTS FOR THE
BROADCAST INDUSTRY.



PROFILE
2-3



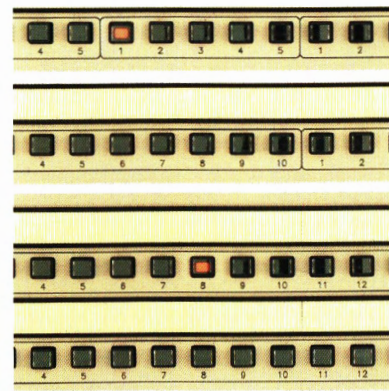
CONSOLES
4-7



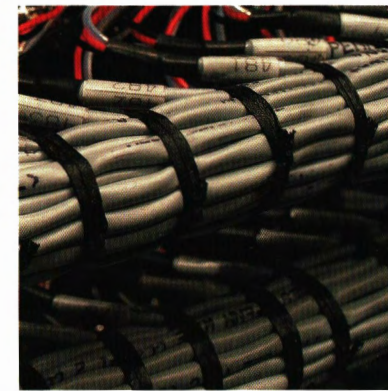
DIGITAL
PRODUCTION
SYSTEMS
8-9



CABINETS
10-11



SYSTEMS
COMPONENTS &
PERIPHERALS
12-13



SYSTEMS
INTEGRATION
14-15

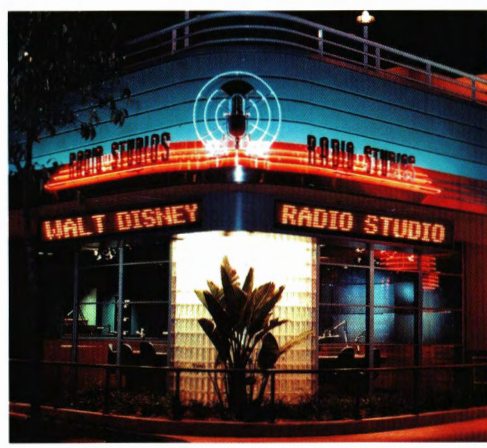




540
449294

Many broadcasters know PR&E simply for our trend-setting consoles and are pleasantly surprised when they discover the wide range of other products and services offered. Products and services targeted to one goal: to assemble the finest studios in the industry. Since 1969, we have designed and equipped over 2,000 studios for the most prestigious names in major market and network broadcasting.

However, you don't have to order an entire studio to receive the benefit of our experience. All PR&E products are designed to perform flawlessly in any studio system. They're always a breeze to install, compatible with all professional grade equipment, totally RFI immune, thoroughly documented, and backed by the best customer support in the industry. That's why leading broadcasters turn to us time and again for their studio equipment and systems requirements. The following pages provide an overview of PR&E products and services. If you would like additional information, please give one of our sales professionals a call. They can advise you on the right solution for your specific application. They're experts at it. After all, for over 25 years, PR&E has been in the business of bringing successful broadcast systems together.



Disney Radio Studio, Florida



KABC, Los Angeles



Universal Studios, Florida



WGN, Chicago

4 X - C L A S S C O N S O L E S

The BMX-III AIR CONSOLE is the third generation of the most popular on-air console in network and major-market broadcasting. By combining unparalleled operating features and advanced performance in a user-intuitive design, the BMX handles the most complex programming effortlessly. While others attempt to imitate its physical appearance and trend-setting features, BMX remains the first choice of market-leading broadcasters.

The BMX-III is designed with the capacity to handle a talk show with two separate telephone mixes, record a stereo feed for later broadcast, plus the capability to work and communicate with two studios and a remote - all at the same time.



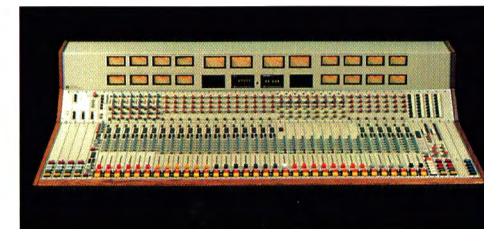
The AMX STEREO PRODUCTION CONSOLE takes the fast, intuitive on-air functions of the BMX and adds stereo production features such as equalization, auxiliary sends and effects returns. AMX is equally at home on the air or in the production room and, like all PR&E consoles, will be the most reliable piece of equipment in the facility.

The ABX MULTITRACK PRODUCTION CONSOLE blends the power of a full-featured multitrack recording studio console with the speed and ease-of-operation of the BMX. This combination makes for an uncompromising broadcast production console, capable of any operational task, while remaining incredibly easy to use.

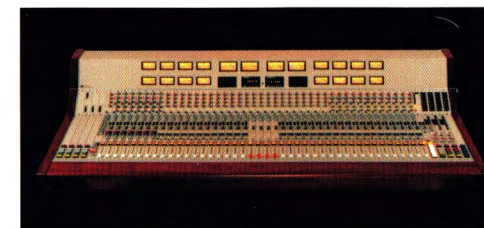
STX STEREO TELEVISION MIXER is designed to accomplish with ease the wide range of on-air and production audio challenges found in television stations. No other mixer in its class offers the power and flexibility of the STX.



AMX standard features include 3 main stereo mix buses, two effect/foldback sends, stereo effects return, multi-function metering, multi-way talkback system, voice slating system, 4 Telco mix-minus feeds plus telephone monitor mix. All mic and line input modules include independent remote control logic.



ABX features multiple stereo outputs plus full equalization, reverb, foldback, solo, multitrack and mixdown capabilities. Universal layout is fully wired for present and future input modules.



STX features custom configuration of all input and sub-master modules with the ability to add, delete and rearrange as future use dictates.





MIXER - CLASS CONSOLES 7

RADIOMIXER AIR CONSOLE elegantly and efficiently handles the most demanding broadcast challenges, from telephone talk and contest recording to multiple talent and guest interview shows. Innovative design and modern manufacturing technology provide Radiomixer with more standard setting features than any other console in its price range.

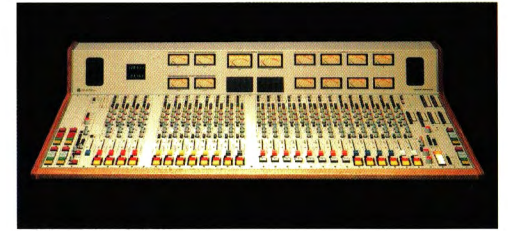
Radiomixer standard features include telco mix system, monaural output, program outputs and control room monitor modules, digital clock, timer and timer control panel, cue speaker and real VU meters. Available in 12, 20 and 28 input module capacity mainframes accommodating any combination of mic and line input modules.



PRODUCTIONMIXER MULTITRACK CONSOLE. Productionmixer is the multitrack production companion to Radiomixer, retaining all of Radiomixer's powerful on-air features while adding impressive production capability. Productionmixer makes an ideal back-up air console. With so many operating features in common, plus the standardized control layout, it's easy for operators to move efficiently from the air studio to the production room.

STEREOMIXER COMPACT CONSOLE. A full-featured stereo broadcast console in a very compact package, Stereomixer is ideal for dubbing, public affairs, talk show and production studios. A wealth of powerful features are contained within the small package including full logic control capabilities. Stereomixer is available in desktop and standard nineteen inch rackmount versions.

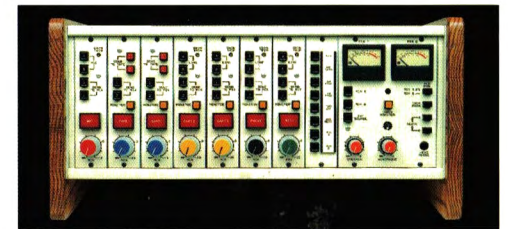
NEWSMIXER like Stereomixer, is a compact desktop or rackmount console created specifically for news recording, editing, dubbing and preparation. Designed for ease of use by non-technical personnel, Newsmixer is found in many of the nation's leading news operations.



Productionmixer standard features include telco mix system, monaural output, program outputs, send outputs, effects return mixes, control room monitor and meter switcher modules, digital clock, timer and timer control panel. Available in 20 and 28 input position mainframes with true modularity to accommodate any combination of mic, line and multitrack modules.



Stereomixer mainframe features eight universal inputs capable of accepting any combination of input and accessory modules.



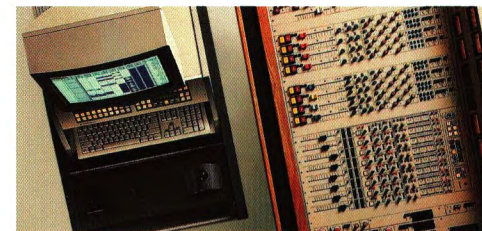
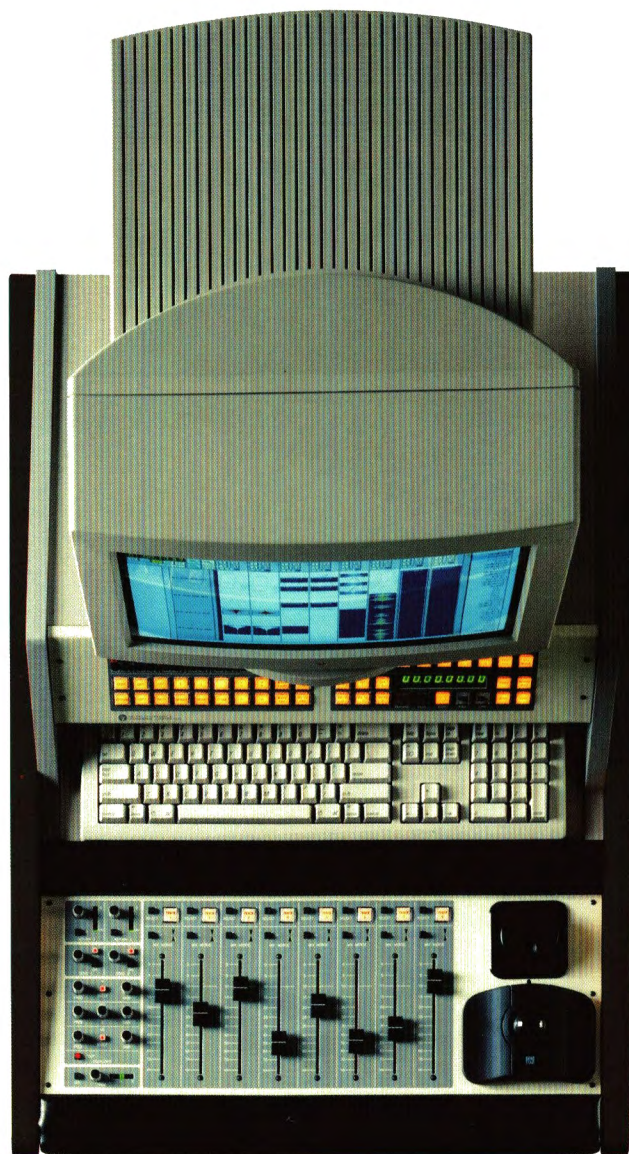
Newsmixer's eight input positions accept any combination of mic, line, tape or equalizer modules, including Telco input/mix-minus and remote line switch. Newsmixer is also equipped with monitor muting and warning light commands to support on-air applications.

8 DIGITAL PRODUCTION SYSTEMS

The ADX family of sophisticated recording and editing workstations has been specifically designed to meet today's broadcast challenges. Digital audio production puts speed, accuracy and creative freedom at your fingertips like never before, while retaining the superior sonic performance of DSP processing.

ADX workstations feature familiar analog transport controls for common functions, enabling a smooth transition from the cut-and-splice world of tape to the creative flexibility of the digital domain. Tedious keyboard commands have been replaced by function-specific buttons. Intuitive software guides the user through a wealth of powerful features. ADX's advanced mix automation will reproduce a spot created last month or last year perfectly, every time.

The ADX ENSEMBLE workstation incorporates an on-board automated mixing surface, in a convenient roll-around package. Specifically designed for those clients who want the powerful benefits of a PR&E workstation along side of their existing production console. ENSEMBLE comes fully equipped, ready to work. Like the ADX EIGHT, ENSEMBLE features touch-sensitive motorized faders and snapshot automation of mix settings.



By adding the Mixstation module to our ABX or Productionmixer consoles, the ADX EIGHT workstation becomes a high-performance replacement for conventional 8-track tape decks. Fully automated touch-sensitive faders instantly recreate complex mixes from yesterday, last week and even last year, complete with snapshot automation settings for pan, EQ and 2 stereo effects sends. All automation is cue-based; once created it follows the cue wherever you move it, independent of time code or track.



ADX PRO is a full-featured, easy-to-afford workstation in a space-efficient design. Removable hard drive provides simultaneous playback of up to eight tracks. The scrub wheel allows precise waveform editing which can be seen as well as heard. And with 32 levels of undo/redo you can experiment with ease.





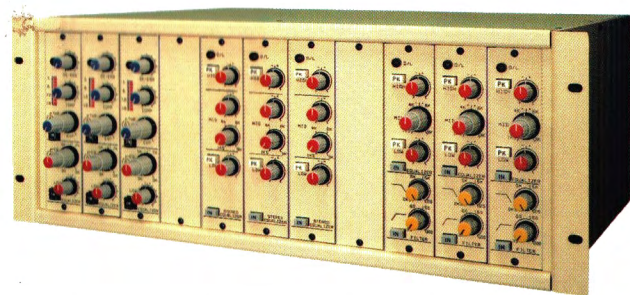
*Custom Cabinetry***CUSTOM CABINETRY**

PR&E is renowned for building custom one-of-a-kind "showcase" studio cabinetry for major stations, networks and even theme parks. Our extensive systems design heritage brings to the client a level of professional experience unduplicated in the industry. Each custom cabinet is specifically designed to accommodate the client's unique requirements of function, architectural space, equipment placement, and interior design. Our cabinetry is manufactured in-house by experienced craftsmen using the finest quality materials. The most discriminating broadcasters demand the consistently superior quality of design and fabrication of PR&E custom cabinetry.

PRIMELINE™ STANDARD CABINETRY

Our Primeline series of cabinet designs are derived from our hands-on experience of building custom cabinets. Taking the most popular features from our custom design experience and utilizing innovative materials and production shop techniques, Primeline cabinetry offers an elegant yet cost effective solution to many broadcast applications. Manufactured in-house by the same skilled craftsmen who create our "showcase" units, Primeline delivers PR&E quality and features to broadcasters who don't require a custom design.

*Primeline™ Standard Cabinetry*



EXP-11 RACK FRAME AND PROCESSOR MODULES

The EXP-11 is designed to house and power the popular mono and stereo equalizer and voice processor modules used in the AMX, ABX and STX consoles. The EXP-11 makes the features of these modules available for independent applications.

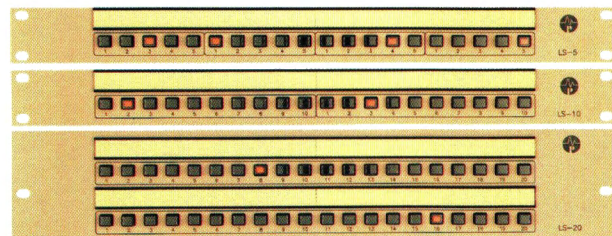


SDA-8A STEREO DISTRIBUTION AMPLIFIER

With the sound quality and reliability of a PR&E console and more features than any audio DA on the market, the SDA-8A was designed for applications requiring reliability, flexibility and uncompromising performance. The compact single rack unit package can deliver up to +26 dBm to each of 8 stereo outputs or 16 monaural outputs, and features a stereo/sum/mono input mode selector, true-ballistic VU meters and unrivaled specifications.

PATCH BAYS

Our prewired patch bay assemblies are built using the highest quality jacks and wire harness detail. We offer a range of general purpose packaged assemblies, with normalling and termination options, as well as custom full-facility patch fields which accommodate the complete scope of our consoles.



LS-5, LS-10 AND LS-20 STEREO LINE SWITCHERS

The LS-Series stereo line switchers are ideal for solving signal routing problems around the studio. The LS-5 makes a great input source selector for recorders, while the LS-10 and LS-20 are often used to expand the number of line or monitor inputs to a console.



PSS-8 PROGRAM SELECT SWITCHER

The PSS-8 is used for selecting one of eight inputs from your studios for the transmitter feed. The switcher contains flexible remote control capabilities and is built around ultra-reliable, power failure proof circuitry.

OEM EQUIPMENT

To support our system integration services, PR&E is the OEM (Original Equipment Manufacturer) supplier of nearly every professional-grade broadcast studio peripheral product you can name. We offer these products at competitive prices, and take care of the interfacing and testing to ensure they function properly in your system.



14 SYSTEMS INTEGRATION

PR&E systems are more than just hardware, cabinetry and wiring. They are the culmination of over twenty-five years experience designing and building world-class broadcast facilities. We appreciate that each broadcast operation is unique. And that there is no such thing as generic, one-size-fits-all, “cookie cutter” solutions.

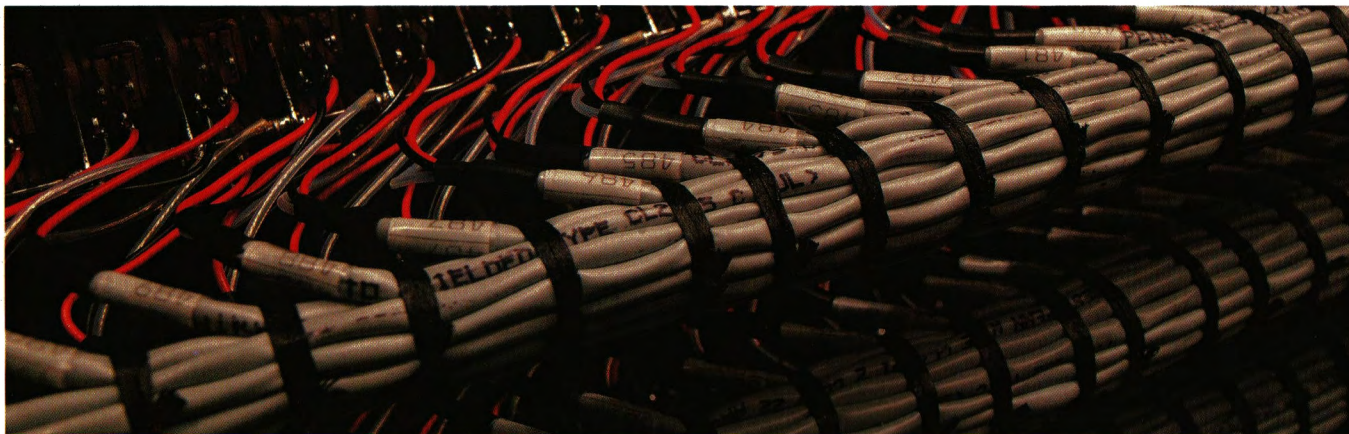
The design process starts by studying your needs and objectives. We then offer a menu of creative ideas and possible design solution alternatives, each backed by solid analysis of the cost and benefits, for you to choose from. Once your choices are made, we carefully design the system to address your objectives with ease and elegance, while applying our strict standards of ergonomics, operating efficiency and flexibility.

Finally, our specialized manufacturing teams build your system with incredible accuracy and attention to detail. Each system comes with a complete documentation package including everything from audio and logic wiring charts to equipment placement and installation drawings. And because the system has been assembled and tested in our factory prior to shipment, on-site reassembly and commissioning is quick and hassle-free.

You might expect to have to invest a fortune for all this. However, we build so many studio systems that we have the details down to a science. Let us show you how affordable owning the best can be.



Complete Systems Documentation



Custom Wiring Packages

Walt Disney World, Florida





PLEASE, LET OUR REPUTATION HELP YOU

Broadcasters come to us for the most reliable, intuitive, and feature-rich equipment and studio systems available. Indeed, we've become known for building the large showcases found in market-leading facilities and network plants. It's often assumed that it costs a lot more to get genuine PR&E quality.

The truth is, our products are competitively priced. Plus, our clients make and save additional money over the long term because of higher reliability, reduced maintenance cost and extended operational life. Give us the opportunity to show you how the knowledge, attention to detail and support for which PR&E is famous, can conserve your capital and operating budgets.

Give us a call at (619) 438-3911, and ask for one of our sales professionals. Talk to us about your plans, and you'll soon discover why PR&E has been setting the standards in broadcast products and studio systems for over 25 years.



WILLIAM HOPKINS
Account Executive

Telephone: 619.438.3911
Facsimile: 619.438.9277
E-Mail: bhopkins@pre.com

PACIFIC RESEARCH & ENGINEERING CORPORATION
2070 Las Palmas Drive Carlsbad, California 92009 USA



PACIFIC RECORDERS & ENGINEERING CORPORATION

2070 Las Palmas Drive
Carlsbad, California, USA 92009
Tel: 619-438-3911
Fax: 619-438-9277